

COLOR TUNER, FLEX PACK, PRESS MATCHER, X GAMUT

Installation Guide



CGS ORIS GmbH

Germany

April 2, 2024

Copyright

© 2024 CGS ORIS GmbH. All rights reserved.

This documentation or any part of it may not be reproduced, published, translated or transmitted, in any form or by any means (electronic, mechanical, photocopying, recording or otherwise) without the prior consent of CGS ORIS GmbH.

Protected by U.S. Patent 7,365,876.

Trademarks

COLOR TUNER, FLEX PACK, PRESS MATCHER and X GAMUT are registered trademarks of CGS ORIS GmbH.

Microsoft and Windows are trademarks of the Microsoft Corporation.

All other trademarks referenced in this documentation are the property of the respective owners.

Disclaimer of Warranty

To the maximum extent permitted by applicable law, in no event shall CGS ORIS GmbH or its suppliers be liable for any damages whatsoever (including without limitation, special, incidental, consequential, or indirect damages for personal injury, loss of business profits, business interruption, loss of business information, or any other pecuniary loss) in connection with or arising from the use or inability to use this product, the accompanying manuals, or any related product. In any case, the entire liability of CGS ORIS GmbH and its suppliers under any provision of this agreement shall be limited to the amount actually paid for the software.

The information contained in this documentation is subject to change without notice.

Contents

Chapter 1:	Requirements.....	1
	Operating System.....	1
	Computer Hardware.....	1
	Measurement Device.....	1
	Software License.....	2
	Firewall Setup.....	2
	User Permissions.....	2
Chapter 2:	Install Printer Driver (COLOR TUNER, FLEX PACK).....	3
	Installing Drivers for Roland DG, Mutoh and MasterMaind Printers.....	3
Chapter 3:	Install Driver for Measurement Device.....	9
	Installing a TECHKON Driver.....	9
	Measuring on Virtual Machines.....	10
	Problem.....	10
	Solution.....	10
Chapter 4:	Download CGS ORIS Installer.....	13
Chapter 5:	Download Printers Plug-in (COLOR TUNER, FLEX PACK).....	15
Chapter 6:	Install CGS ORIS Program and Hotfix.....	17
	Installation Being Blocked?.....	20
	Components Added by Installation.....	21
Chapter 7:	Activate CGS ORIS Software.....	23
	Activating Online License.....	23
	Loading License Files for a Dongle.....	24
Chapter 8:	Enable Access to Network Folders.....	27
	On the Remote Computer.....	27
	On the Local Computer.....	29

1

Requirements

Operating System

Supported Microsoft Windows versions:

- Windows 11 Pro, 10
- Windows Server 2022, 2019, 2016

For a complete list of CGS ORIS program versions and supported operating systems, visit www.cgs-oris.com and select **Support > Service & Support > Windows Compatibility**.

Computer Hardware

Minimum requirement:

- Dual-core CPU with 8 GB RAM and 250 GB HDD

Recommended for optimum performance and high throughput:

- Intel Core i7 6th generation or better
- 16 GB RAM or more
- SSD disk with 500 GB or more

Measurement Device

CGS ORIS products support a wide range of spectrophotometers, chart readers and scanning tables, including the latest devices from X-Rite and Konica Minolta. COLOR TUNER and FLEX PACK also support measuring with inline spectrophotometers such as EPSON SpectroProofer ILS30.

For more details, visit www.cgs-oris.com, select your program from the **Products** menu, scroll down on the page and expand the **+ Supported measurement devices** section.

Software License

- Online license for CGS ORIS software, or alternatively:
- Software protection dongle for USB port (at additional cost)
- Additional licenses for optional features

If started without a valid software license, the CGS ORIS program runs as a 30-day fully functional demo version. After the 30-day trial period has expired, output is no longer possible.

During the trial period there are the following limitations:

- Color tables created in demo mode cannot be used with a licensed CGS ORIS program version.
- Watermarks are added arbitrarily.
- Optional features that require an additional license are unavailable.
- COLOR TUNER and FLEX PACK: You can output on one printer only.

Firewall Setup

License and maintenance information are verified using a secure SSL connection to the CGS ORIS license server www.orislicensing.com.

Please ensure that the CGS ORIS license server is accessible via HTTPS port 443 and is not blocked by your company's firewall. If necessary, adjust your firewall settings and add the server URL to the firewall's whitelist.

Ensuring the accessibility of the license server is crucial as it enables the CGS ORIS program to automatically notify you of software updates and allows you to download and install them seamlessly.

User Permissions

Installing the CGS ORIS program requires administrative privileges. There are two options:

- Before running the CGS ORIS installation program, log in to Windows as a user with administrative rights.
- Start the installation program as a standard user. You will be prompted to enter administrative user credentials.

2

Install Printer Driver (COLOR TUNER, FLEX PACK)

Connect the printer to your network and install the original printer driver.

1. Connect the printer to your computer network (not via USB).
2. Open the website of the printer manufacturer.
3. Download the original Windows printer driver.
4. Install this printer driver.





We recommend to connect the printer driver to a new **Standard TCP/IP Port**. This usually ensures the most reliable communication. If possible, do not use a proprietary printer port such as *EpsonNet Print Port* or the like.

Installing Drivers for Roland DG, Mutoh and MasterMaid Printers

Windows printer drivers for Roland DG, Mutoh and MasterMaid printers may be unavailable or difficult to obtain. We therefore recommend to create a local generic TCP/IP printer. It is important to name the printer in accordance with the printer model and ink set.

Connect the printer to your network and assign an IP address according to the instructions in the printer's user manual. Turn the printer on and make sure it is accessible on the network.

1. Press the  key or click on the  **Search** box of the Windows taskbar.
2. Type `Control Panel` and press **Enter**.
3. Click **View Devices and Printers**.
4. Windows 10:
 1. Click on **Add a printer**.
 2. Click on **The printer that I want isn't listed**.
5. Windows 11:
 1. Expand the **Printers & scanners** section.

2. Click on **Add device**.
3. Wait a moment, then scroll down the list until you see the entry **The printer that I want isn't listed**.
4. Click on **Add manually**.
6. Select **Add a local printer or network printer with manual settings**.
7. Select **Create a new port**, then select **Standard TCP/IP Port** from the **Type of port** list.
8. Enter the printer's IP address.
9. If the printer is offline or unreachable, you are prompted to specify the device type. Leave the default settings **Standard** and **Generic Network Card**.
10. Select the printer manufacturer **Generic** and the printer **Generic/Text Only**.
11. Enter the printer name exactly as shown below.



Make sure the printer name is spelt exactly as indicated. The program uses the Windows printer name to identify the ink set installed in the printer.

Table 2.1: Roland SOLJET series

Printer	Ink set	Printer name to enter
PRO4 XR-640	ECO-SOL MAX2	Roland XR-640
	XG INKS	Roland XR-640 XGINKS

Table 2.2: Roland TrueVIS series

Printer	Ink set	Printer name to enter
VG3-640	CMYK, k, orange, green, white	Roland VG3-640
	CMYK, cmk, white	Roland VG3-640 CMYKLCLMLKWH
	2x CMYK	Roland VG3-640 CMYK

Table 2.2: Roland TrueVIS series

Printer	Ink set	Printer name to enter
VG3-540	CMYK, k, orange, green, white	Roland VG3-540
	CMYK, cmk, white	Roland VG3-540 CMYKLCLMLKWH
	2x CMYK	Roland VG3-540 CMYK
VG2-640	TrueVIS TR2	Roland VG2-640
VG2-540	TrueVIS TR2	Roland VG2-540

Table 2.3: Roland VersaCAMM series

Printer	Ink set	Printer name to enter
VS-640i	ECO-SOL MAX2	Roland VS-640i
	XG INKS	Roland VS-640i XGINKS
VS-540i	ECO-SOL MAX2	Roland VS-540i
	XG INKS	Roland VS-540i XGINKS
VS-300i	ECO-SOL MAX2	Roland VS-300i
	XG INKS	Roland VS-300i XGINKS
VS-640	ECO-SOL MAX	Roland VS-640
	XG INKS	Roland VS-640 XGINKS
VS-540	ECO-SOL MAX	Roland VS-540
	XG INKS	Roland VS-540 XGINKS
VS-420	ECO-SOL MAX	Roland VS-420
	XG INKS	Roland VS-420 XGINKS
VS-300	ECO-SOL MAX	Roland VS-300
	XG INKS	Roland VS-300 XGINKS

Table 2.4: Roland VersaUV series

Printer	Ink set	Printer name to enter
LEF-200	ECO-UV	Roland LEF-200
	ECO-UV4	Roland LEF-200 ECOUV4

Table 2.4: Roland VersaUV series

Printer	Ink set	Printer name to enter
LEF2-200	ECO-UV	Roland LEF2-200
	ECO-UV4	Roland LEF2-200 ECOUV4
LEF-300	ECO-UV4	Roland LEF-300
LEF2-300	ECO-UV4	Roland LEF2-300
LEC2-300	CMYK	Roland LEC2-300 CMYK_EUV4
	CMYK, white, gloss	Roland LEC2-300
LEC2-330	CMYK, 2x white, 2x gloss	Roland LEC2-330
	2x CMYK	Roland LEC2-330 CMYK
	CMYK, orange, gloss, red, white	Roland LEC2-330 CMYKORREGLWH ¹
LEC2-640	CMYK, 2x white, 2x gloss	Roland LEC2-640
	2x CMYK	Roland LEC2-640 CMYK
	CMYK, orange, gloss, red, white	Roland LEC2-640 CMYKORREGLWH ¹
LEC-540	ECO-UV, ECO-UV3 or ECO-UV S	Roland LEC-540
LEC-330		Roland LEC-330
LEC-300, 300A		Roland LEC-300
LEJ-640		Roland LEJ-640

¹ Use these names if you want to use the printer for cold foiling applications.

Table 2.5: Mutoh ValueJet series

Printer	Ink set	Printer name to enter
VJ-628MP	CMYK	MUTOH VJ-628MP
	CMYK + white	MUTOH VJ-628MP CMYKWH
	CMYK + cm	MUTOH VJ-628MP CMYKLCLM
	CMYK + cm + white	MUTOH VJ-628MP CMYKLCLMWH
	CMYK + cmk	MUTOH VJ-628MP CMYKLCLMLK
	CMYK + cmk + white	MUTOH VJ-628MP CMYKLCLMLKWH
	CMYK + orange, green, blue	MUTOH VJ-628MP CMYKORGRBL
	CMYK + orange, green, blue, white	MUTOH VJ-628MP CMYKORGRBLWH
VJ-1617H	CMYK	MUTOH VJ-1617H
	CMYK + white	MUTOH VJ-1617H CMYKWH
VJ-1627MH	CMYK	MUTOH VJ-1627MH
	CMYK + white	MUTOH VJ-1627MH CMYKWH
	CMYK + cmk	MUTOH VJ-1627MH CMYKLCLMLK
VJ-1628MH	CMYK + cmk + white	MUTOH VJ-1628MH CMYKLCLMLKWH
	CMYK + white + white	MUTOH VJ-1628MH CMYKWH
	CMYK + orange, green, blue	MUTOH VJ-1628MH CMYKORGRBL
	CMYK + orange, green, blue, white	MUTOH VJ-1628MH CMYKORGRBLWH

Table 2.6: MasterMaid StreamMaster series

Printer name to enter
MasterMaid StreamMaster WG-V 640
MasterMaid StreamMaster WG-V 540

Table 2.6: *MasterMaind StreamMaster series*

Printer name to enter
MasterMaind StreamMaster WG-V 300
MasterMaind StreamMaster WG 640
MasterMaind StreamMaster WG 540
MasterMaind StreamMaster WG 300

3

Install Driver for Measurement Device

Connect the measurement device and install the manufacturer's original device driver.

1. Connect the measurement device to your computer's USB port or to your network, respectively.

We recommend connecting the measurement device directly to the USB port. The device may not work correctly if it is connected to a USB hub.

2. Download the original device driver from the manufacturer's website if the measurement device is not accompanied by a CD or DVD containing driver software.
3. Install the device driver according to the manufacturer's instructions.

Installing a TECHKON Driver





Measurement devices from TECHKON require the TECHKON Device Service to be installed and running. You can download the installer for this service from the CGS ORIS website.

1. Open the CGS ORIS website www.cgs-oris.com.
2. Select **Support > Downloads > Other Useful Data**.
3. Click the **+ Software, Utilities and Drivers** button to expand this list.
4. Click the  icon next to **TECHKON Device Service** to download the file `TDSERVICE.n.exe` to your file system.

The character `n` stands for the version number.

5. Double-click the file `TDSERVICE.n.exe` to install the TECHKON Device Service.
6. Reboot your computer or start the service manually.

YOU ARE HERE: [HOME](#) / [SUPPORT](#) / [DOWNLOADS](#) / [OTHER USEFUL DATA](#)

File	Size	Document	Version	Notes	Release Date
	7.9 MB	CGS ORIS test profiles (Visual check, to test if ICC profiles are working within RIP (includes ICC device link and output profiles))	—	Info	03-Jun-2014
	20.2 MB	Windows HASP driver for CGS ORIS dongles (Windows 7 and higher)	8.11		03-Aug-2020
	198 KB	CGS ORIS PPDs	—		09-Jan-2007
	239 MB	TECHKON Service installer	2.0.0.7		06-May-2020

Measuring on Virtual Machines

Measuring with X-Rite devices may require the use of USB-to-network devices if the CGS ORIS program runs on a virtual machine.

■ Problem

You have installed COLOR TUNER, FLEX PACK, PRESS MATCHER or X GAMUT on a virtual machine. This is an emulation of a particular computer system created by such tools as *VMWare*.

If an X-Rite measurement device is installed on a virtual machine, there is no guarantee that it can be connected or that it works correctly. It has been found that identical installations of a virtual machine may work for some users and not for others. X-Rite say:

We do not test the SDK's on virtual machines, and we do not offer support for that configuration.

■ Solution

Connect your measurement using a USB-to-network device such as *USB Device Server* from SEH Computertechnik GmbH. This solution has been tested successfully by CGS ORIS.

USB Device Server is a hardware-based solution for integrating USB devices into a computer network. It supports virtualized environments such as *VMWare*.

Currently there are two *USB Device Server* models available:

- *utnserver Pro* with 2 USB ports
- *utnserver ProMAX* with 4 USB ports

Integrate the *USB Device Server* into your network and connect the measurement device to one of its USB ports.

Also install *SEH UTN Manager* on the virtual machine. Using this software you can assign the USB port of the *USB Device Server* to the virtual machine. You can then use the measurement device as if it was connected directly to the virtual machine.

For more details check out the SEH website seh-technology.com.



Figure 3.1: *SEH utnserver Pro*



4


Download CGS ORIS Installer



Download the installation file for the latest version of **COLOR TUNER**, **FLEX PACK**, **PRESS MATCHER** or **X GAMUT** from the **CGS ORIS** web-site. If a hotfix is available for that version, download it, too.

1. Open the CGS ORIS website www.cgs-oris.com.
2. Navigate to the **Software Downloads** page by selecting **Support > Downloads > Software**.
3. Select the CGS ORIS program from the **Products** menu on the left.
4. Click the **+ Software** button to expand the list of software releases.
5. To download the latest software version to your file system, click the  icon next to **Full Release** in the topmost row.
6. Enter the user name and password you have received from your CGS ORIS partner.
7. To download a hotfix, click the  icon next to **Hotfix** in the second row.

CGS ORIS installation files follow the naming convention <product><version no.>_<build no.>. Examples:

FP43_91.exe	Installer for FLEX PACK Version 4.3 build 91
FP4301_105_Hotfix.exe	Hotfix installer for updating FLEX PACK Version 4.3 to Version 4.3.0.1 build 105




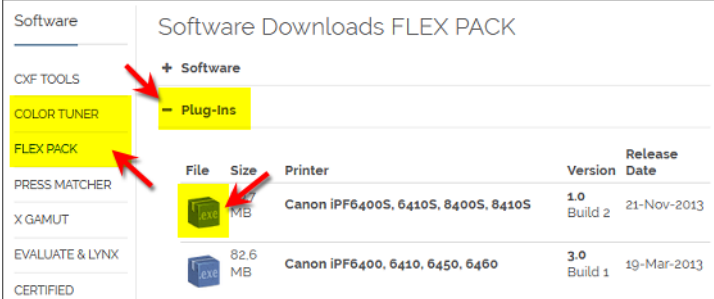
File	Size	Software	Version	Release Date	Notes	Status
	1.27 GB	FLEX PACK Full Release	4.3 Build 91	27-Sep-2023	English German	Protected
	24.9 MB	Hotfix	4.3.0.1 Build 105	07-Dec-2023	Hotfixes	Free



5

Download Printers Plug-in (COLOR TUNER, FLEX PACK)

When installing the CGS ORIS program you may have to additionally install a printer plug-in with additional files for the installation process. This is only required for certain Canon and EPSON printers. Visit the CGS ORIS website to check if your printer requires a plug-in and download it from there.

1. Open the CGS ORIS website www.cgs-oris.com.
2. Navigate to the **Software Downloads** page by selecting **Support > Downloads > Software**.
3. Select **COLOR TUNER** or **FLEX PACK** from the **Products** menu on the left.
4. Click the **+ Plug-Ins** button to expand the list of printer plug-ins.
5. Scroll down the list until you find your printer's name.
6. Click the  icon to download the plug-in (*.exe) to your file system.



File	Size	Printer	Version	Release Date
	82.6 MB	Canon iPF6400S, 6410S, 8400S, 8410S	1.0 Build 2	21-Nov-2013
	82.6 MB	Canon iPF6400, 6410, 6450, 6460	3.0 Build 1	19-Mar-2013

6

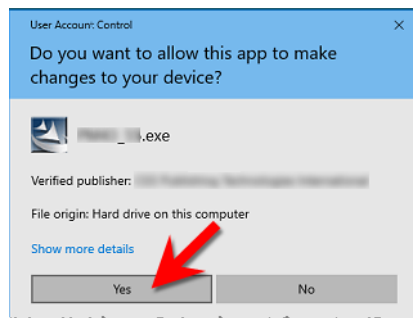
Install CGS ORIS Program and Hotfix

Run the **COLOR TUNER, FLEX PACK, PRESS MATCHER** or **X GAMUT** installation program by double-clicking the *.exe file which you have downloaded from the CGS ORIS website. A wizard will guide you step by step. It is usually advisable to leave the default settings. If you have downloaded a hotfix, install it in the same way after completing the wizard.

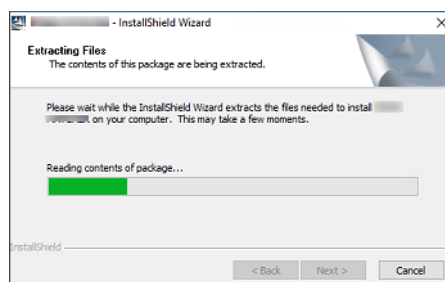
We recommend to temporarily disable your antivirus software. Antivirus programs may occasionally block files that are being used by the installation program.

1. Open the folder where you have downloaded the CGS ORIS installation program (*.exe).
2. Double-click this file.

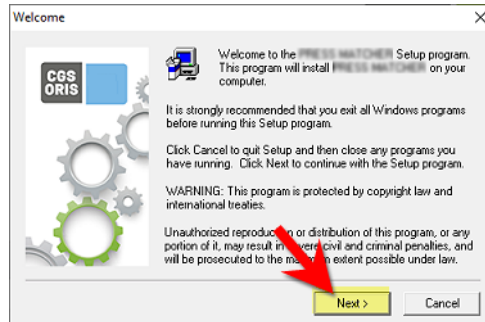
A prompt resembling the following will appear:



3. If you are working with a standard user account, you will be asked to specify the credentials of a Windows user with administrative privileges. Enter the user name and password.
4. Click **Yes** to close the prompt window.
5. Wait until all files have been extracted.



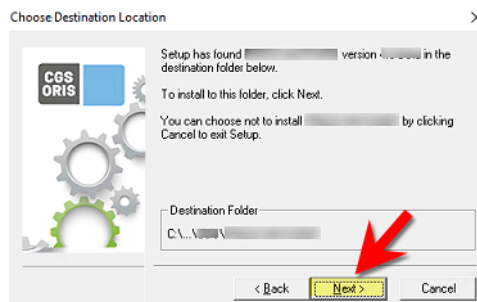
6. Click **Next >** to start the installation process. A wizard will guide you step by step.



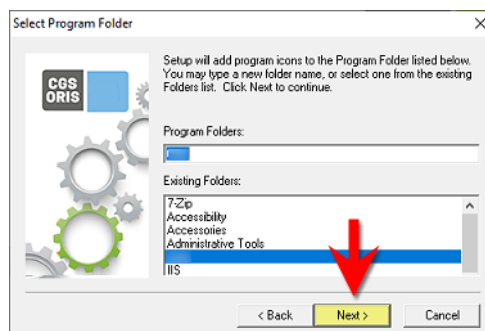
7. Click **Next >** to select the default destination folder.

By default, the program installs on your system disk drive (usually C:). However, you are free to choose any other drive (such as D:).

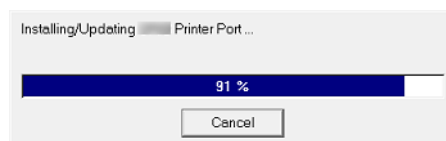
Note that there are files that are always stored on the system drive such as the SQL database, print spooler and temporary files. Therefore some disk space on your system drive is always used.



8. Click **Next >** to select the default program folder for the program icons.



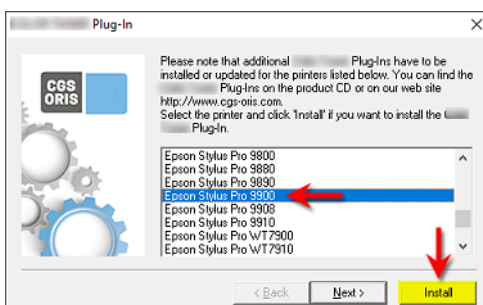
9. Wait until all program files have been copied to your file system.



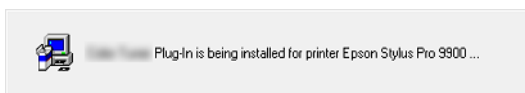
10. The following screen appears in a COLOR TUNER or FLEX PACK installation because additional files available in a plug-in are required

for certain Canon and EPSON printers. Take the following steps if your printer is listed here. If not, click **Next >** to proceed with step 11.

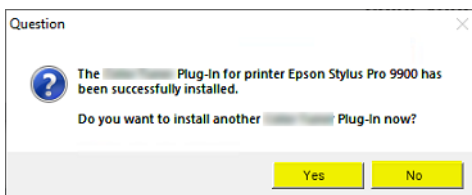
1. Select the printer and click the **Install** button.



2. Navigate to the folder where you have downloaded the printer plug-in file. Select this file (* .exe).
3. Wait until the plug-in installation has completed.



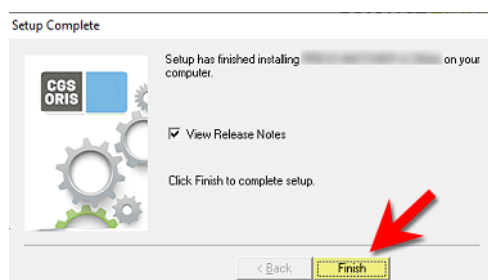
4. Click **Yes** to install a plug-in for another printer, otherwise **No**.



11. If you are using a software protection dongle, now is the time to plug it into the computer's USB port. Click **Next >**.



12. Click **Finish** when the installation process has completed.



The Release Notes for the CGS ORIS program will open in your browser, unless you have disabled this option in the last wizard screen.

If a hotfix is available for your CGS ORIS program version:

13. Open the folder where you have downloaded the hotfix installation program (*_Hotfix.exe).
14. Double-click this file.
15. A wizard will guide you step by step. Follow the instructions on the screen.

The procedure is similar to program installation, but much shorter.

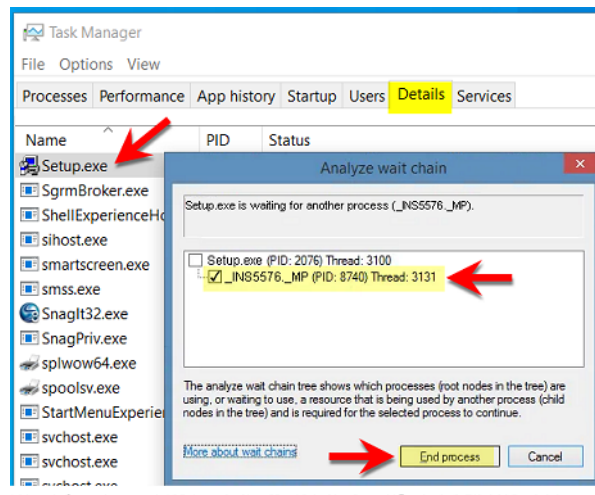
Installation Being Blocked?

Certain programs may block the installation process. The process pauses after extracting the installation files. In this case use Task Manager to find and terminate the process which is blocking.

1. If the current version of Adobe Creative Cloud is installed, exit the Adobe CC desktop app.

Do this by selecting **File > Exit Creative Cloud**, then click **Quit** to stop all background processes.
2. Start Windows Task Manager and click the **Details** tab.
3. Right-click `Setup.exe` and select **Analyze wait chain**.
4. The process listed under `Setup.exe` is blocking the installation. Select and end this process.

Figure 6.1: Ending process blocking CGS ORIS installation



Components Added by Installation

A CGS ORIS program installation adds various Windows system components and also installs CERTIFIED.

The following components get installed and created automatically in addition to the actual CGS ORIS program:

- CERTIFIED, a CGS ORIS application for verifying print quality
- Microsoft Internet Information Services (IIS)
- SQL database
- A Windows user account named *ORIS-Service*
- A Windows service running under this user account

Product	Name of Windows service
COLOR TUNER	<i>ORIS Color Tuner Service</i>
FLEX PACK	<i>ORIS Flex Pack Service</i>
PRESS MATCHER	<i>ORIS Press Matcher Service</i>
X GAMUT	<i>ORIS X Gamut Service</i>

7


Activate CGS ORIS Software

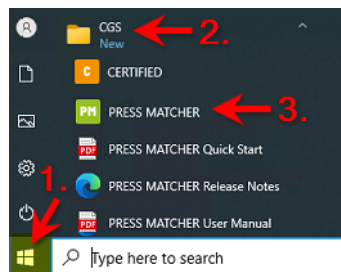
If you have received a license code, enter it in your CGS ORIS program using the *Help > License Info > Activate license* command. If you have received a dongle, however, select *Help > License Info > Add license* and load the two license files with your dongle number.

Activating Online License

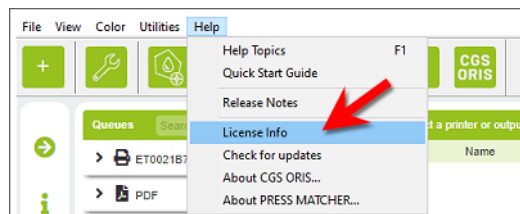
Please ensure that the CGS ORIS license server www.orislicensing.com is accessible via HTTPS port 443 and is not blocked by your company's fire-wall.

1. Start the CGS ORIS program.

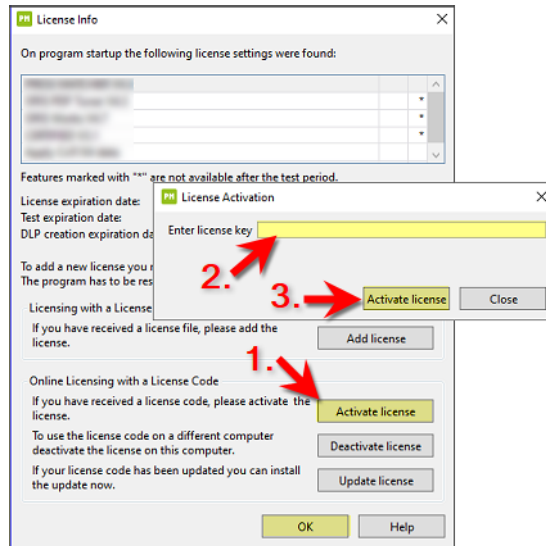
Open the Windows **Start** menu , scroll down until you reach the **CGS** folder, open this folder, then select the name of the CGS ORIS program.



2. In the CGS ORIS program, select **Help > License Info**.

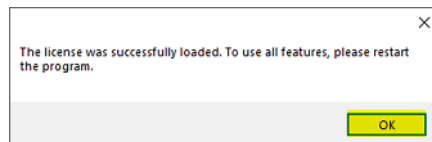


3. Click the **Activate license** button.



4. Enter the license code you have received from your CGS ORIS partner, then click **Activate license**.

A confirmation message appears.



5. Click **OK** to dismiss the message box. Click **OK** again to close the **License Info** dialog.
6. Restart the CGS ORIS program.

Loading License Files for a Dongle


Take these steps if you have received a set of license files from your CGS ORIS partner. Select these files in your CGS ORIS program using the [Help > License Info > Add license](#) command.

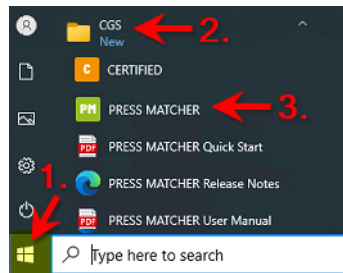
License files follow the pattern
<dongle number>_D<n>_<expiration date>.txt. There are two files per license: *D1*.txt and *D3*.txt.

Example:

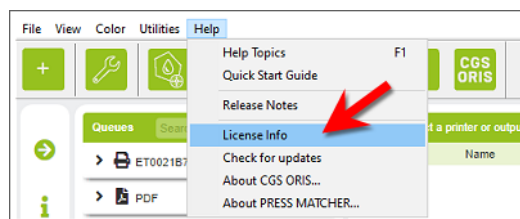
- U10830_D1_31.07.2024.txt
- U10830_D3_31.07.2024.txt

1. Start the CGS ORIS program.

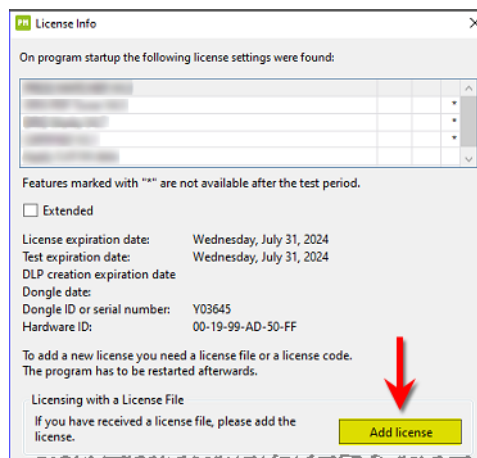
Open the Windows **Start** menu , scroll down until you reach the **CGS** folder, open this folder, then select the name of the CGS ORIS program.



2. In the CGS ORIS program, select **Help** > **License Info**.

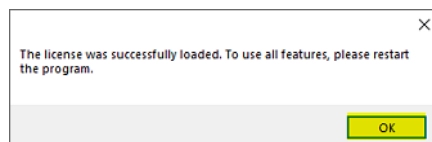


3. Click the **Add license** button. A file selection box opens.



4. Select the first of the two license files (*D1*.txt).

A confirmation message appears.



5. Click **OK** to dismiss the message box.

6. Restart the CGS ORIS program.

7. Reselect **Help** > **License Info** > **Add license**.

8. Select the second license file (*D3*.txt).
9. Click **OK** to dismiss the message box.
10. Restart the CGS ORIS program.

8

Enable Access to Network Folders

If the CGS ORIS program should be able to process jobs residing in shared network folders or to write files to such locations, make sure everyone has full access to these folders. In addition, change the name of the Windows service for the CGS ORIS program to run under the local *SYSTEM* user account.

Print data calculations, file output and other background processes are handled by a Windows service named *ORIS Color Tuner Service*, *ORIS Flex Pack Service*, *ORIS Press Matcher Service* or *ORIS X Gamut Service*, respectively. For security reasons, this service runs under a separate Windows user account named *ORIS-Service*.

The *ORIS Color Tuner Service*, *ORIS Flex Pack Service*, *ORIS Press Matcher Service* or *ORIS X Gamut Service* does not have the permission to access any network folders. As a consequence, the following actions are likely to fail owing to insufficient access rights:

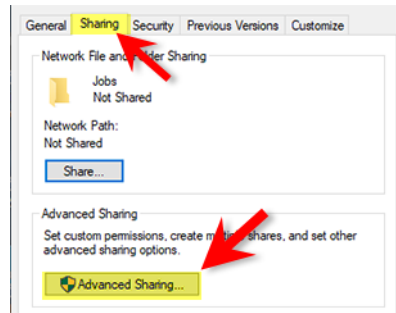
- Getting input files from *watched folders* residing on a remote computer on the network.
This means that jobs in such folders cannot be processed.
- Writing input files to *error or success folders* on a remote computer.
This means that jobs cannot be saved there after processing.
- Writing output files to *output folders* on a remote computer (PRESS MATCHER, X GAMUT).
This means that file conversion results cannot be saved.

On the Remote Computer

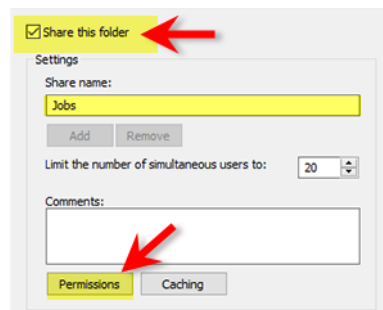
On the remote computer to be accessed by the CGS ORIS program, set the permission for the shared folder and, if required, for the sharing itself. Every user must have read and write access.

The instructions below explain how do this on Windows systems.

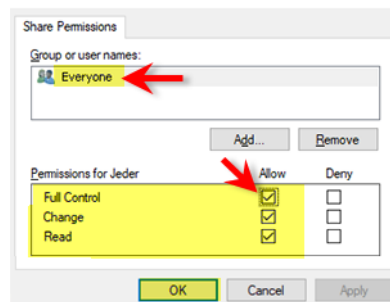
1. Right-click the folder to be shared and select **Properties**.
2. Select the **Sharing** tab.
3. Click on **Advanced Sharing**.



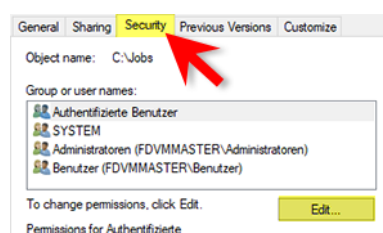
4. Enable the option **Share this folder**.
5. *Optional:* Modify the name in the **Share name** box.
6. Click the **Permissions** button.



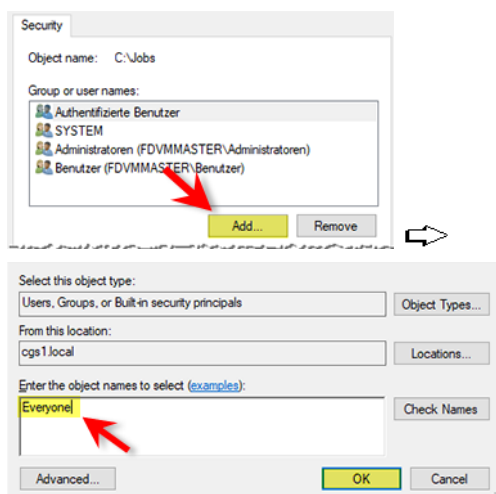
7. Select the user **Everyone**.
8. Set the permissions according to your requirements.
To grant read and write access, for example, enable the **Full control/Allow** option.



9. Click **OK** twice to return to the **Properties** dialog.
10. Select the **Security** tab.



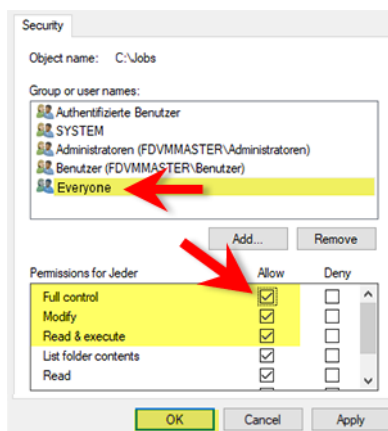
11. If the user **Everyone** is not listed, select **Edit > Add**, type `Everyone`, then click **OK**.



12. Select the user **Everyone**.

13. Set the permissions according to your requirements.


To grant read and write access, for example, enable the **Full control/Allow** option.



14. Click **OK** to close the dialog.

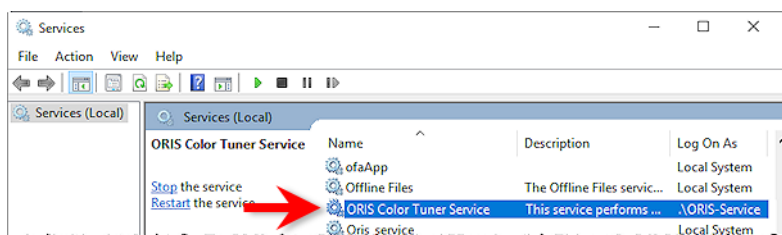
On the Local Computer

Perform the following steps on the local computer where the **CGS ORIS** program is running.

1. Right-click the Windows icon  and select **Run**.
2. Enter `services.msc` and click **OK**.

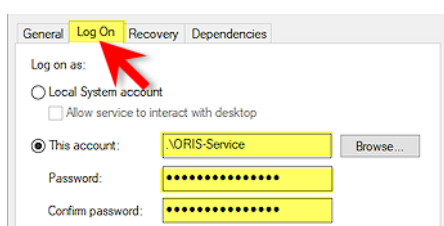
This opens the list of Windows services.

3. Double-click the name **ORIS Color Tuner Service**, **ORIS Flex Pack Service**, **ORIS Press Matcher Service** or **ORIS X Gamut Service**, respectively.

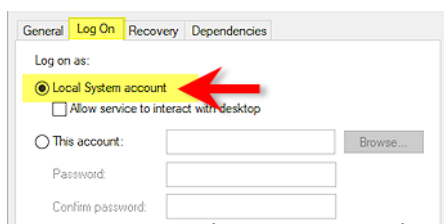


4. Select the **Log on** tab.

The current settings are as shown in the following image:



5. Enable the option **Local System account**.



6. Click **OK** to close the dialog.